

# Communicating Power

## CELLTRON ADVANCED Stationary Battery String Analyzer

The **CELLTRON® ADVANCED** is a professional level tool for stationary battery management. Research proven technology and field-tested design make it a must for critical power maintenance. Using conductance technology, the **CELLTRON ADVANCED** effectively trends a key parameter linked to battery state of health, providing early indication of battery degradation or failure.

### Features:

- Provides advanced warning of potential battery failures
- Consistent, repeatable on-line testing without discharge to batteries
- Measures individual cell and overall string health and voltage
- Tests 2-volt through 16-volt batteries on-line or off-line
- Tests each cell in under 10 seconds
- Helps prioritize battery replacements for more cost-effective system management
- Tests both battery cell and intercell strap integrity
- High ampere-hour (up to 6000 AH) testing capability
- 16 volt testing capability
- Tests multiple intercell connectors
- Voltage measurement to 3 decimal places
- 16 internal memory registers capable of storing 480 consecutive test results and overall string statistics
- Voltage logging only option
- Quick, simple, safe & accurate operation
- Quick reset option for erroneous test entries
- User definable battery reference number storage and fault thresholds
- Portable IR wireless printing and data transfer to PC laptop
- No external power source needed



Stationary Power Products  
Division of Midtronics, Inc.



Advancing  
Battery Management

# CELLTRON ADVANCED

## Stationary Battery String Analyzer

### Specifications

#### Model Number:

CTA-4000 (Kit); CTA-2000 (Analyzer Only)

#### Applications:

Tests individual lead acid cells or monoblocs (up to 16 Volts) in any common configuration

#### Voltage:

1.0 - 20 Volts DC

#### Conductance:

100 - 19,990 Siemens

#### Test Data Storage:

16 string locations of 480 test results stored internally

#### Accuracy:

+ 2% across test range

#### Voltmeter Resolution:

5 mV DC

#### User Programmable Functions:

- Preset values for over 250 battery types
- Low voltage alarm setting
- Low conductance warning / failure

#### Calibration:

Auto-calibration prior to every test, no future calibration required

#### Power Requirements:

9.6, 1600 mAh, NiMH rechargeable battery pack & charger

#### Environmental Operating Range:

0 to +40°C, 95% relative humidity, non-condensing

#### Storage Temperature:

-20 to 82°C

#### Over Voltage Protection:

- Fused protection to 16 volts DC
- Reverse polarity protected

#### Housing Material:

Acid resistant ABS plastic

#### Analyzer Dimensions:

9 in x 4 in x 2 1/2 in  
230 mm x 102 mm x 65 mm

#### Case Dimensions:

19 in x 15.5 in x 5 in  
750 mm x 610 mm x 200 mm

#### Analyzer Weight:

2 lb / 907 gm

#### CTA-4000 Test Kit

#### Shipping Weight:

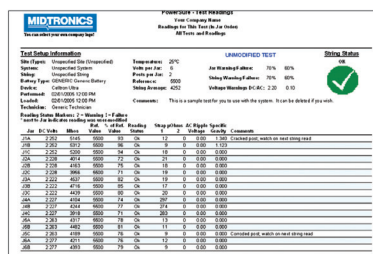
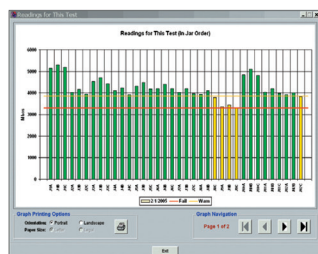
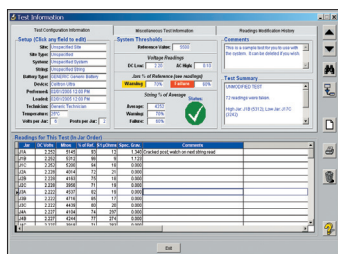
14 lb / 6.4 kg



CTA-4000 Kit

#### Accessories included in CTA-4000 Kit

- Protective boot
- Rechargeable battery pack
- Infrared PC data receiver & software
- Infrared printer
- Infrared temperature sensor
- Protective carrying case
- Both clamp and probe cables
- Spare fuses, printer paper, probe tips



CTA-4000 Kit includes the new Midtronics PowerSure™ Battery Management Database—offering a complete data collection and reporting tool.



www.midtronics.com

#### Corporate Headquarters

Willowbrook, IL USA

Phone: 1.630.323.2800

Canadian Inquiries

Toll Free: 1.866.592.8053

#### Midtronics b.v.

European Headquarters

IJsselstein, The Netherlands

Serving Europe, Africa, the Middle East, and The Netherlands

Phone: +31 306 868 150

#### European Sales Locations

IJsselstein, The Netherlands

Paris, France

Dusseldorf, Germany

#### Midtronics China Office

China Operations

Shenzhen, China

Phone: +86 755 8202 2037

#### Midtronics India

Mumbai, India

Phone: +91.989 237 6661

#### Asia/Pacific (excluding China)

Contact Corporate Headquarters

Phone: +1.630.323.2800